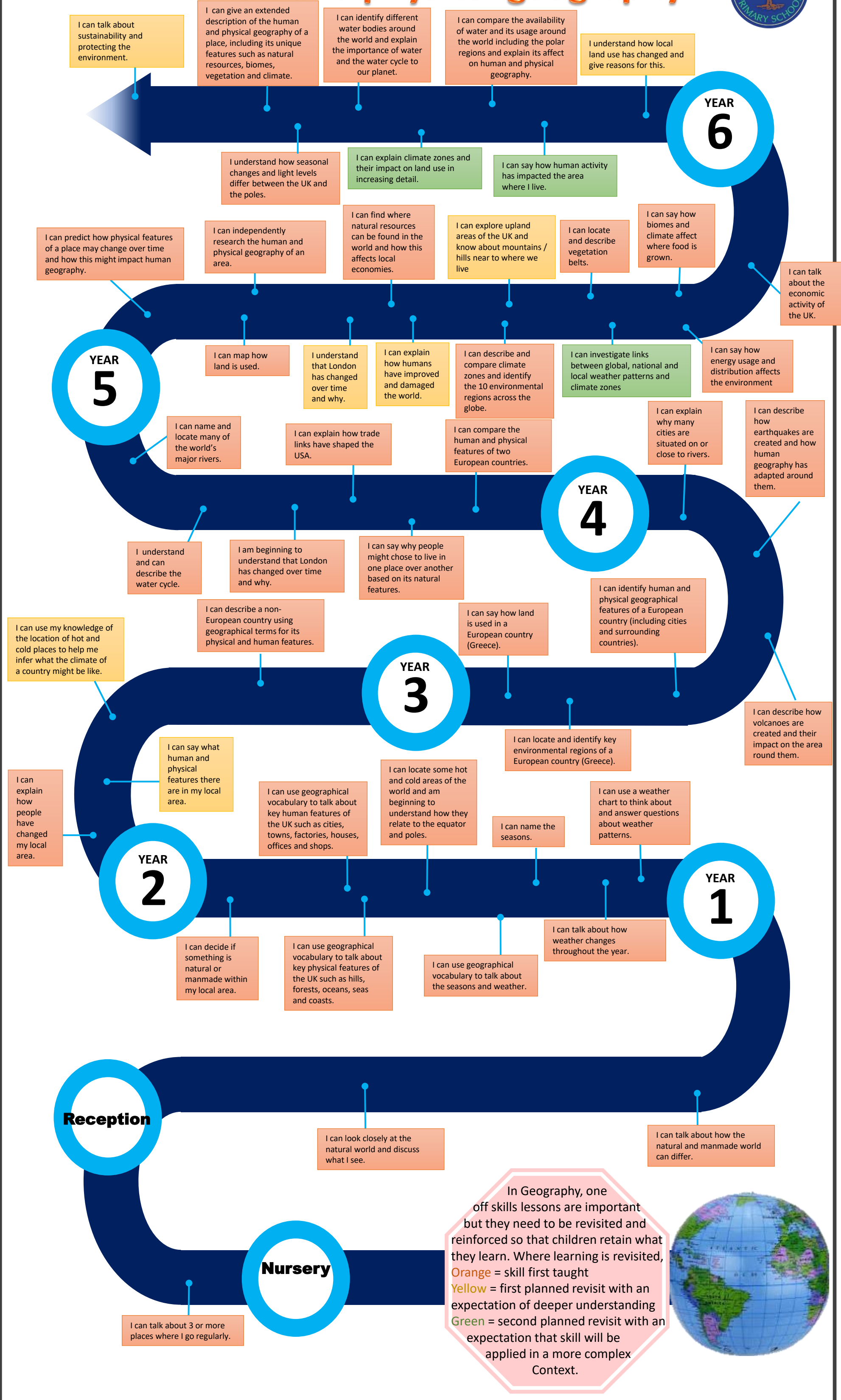


# Barrow Hedges Geography Journey

## Human and physical geography



In Geography, one off skills lessons are important but they need to be revisited and reinforced so that children retain what they learn. Where learning is revisited, **Orange** = skill first taught **Yellow** = first planned revisit with an expectation of deeper understanding **Green** = second planned revisit with an expectation that skill will be applied in a more complex Context.

